

8-70 t

SYMMETRIC. SUPERIOR. ROBUST.

The symmetrical Lehnhoff SQ quick couplers – fully hydraulic and hydraulic – according to the S-Standard for compact and hydraulic excavators.



THE S-STANDARD.

Worldwide, the increasingly popular S-Standard as an open industry standard with the characteristic symmetrical shafts for more compatibility between excavator and attachment.

Lehnhoff offers the S-Standard in the SQ quick couplers (Symmetrical Quick Coupler) which in many construction site situations offer decisive advantages in handling.



THE ADVANTAGES OF LEHNHOFF SQ: LEHNHOFF S-STANDARD.



- Based on the globally established S-Standard
- The standardized 2-shaft adapter allows for turning 180°, i.e. the bucket can be used in reverse mode as a shovel
- Compact design that is comparatively light and very robust
- Extensive preservation of the excavator's breakout force
- High operator friendliness
- Simple equipment or conversion of buckets
- Well suited for tiltrotator application
- Size specification refers to shaft diameter (SQ70 = Ø 70 mm)

THOUGHT AHEAD. THE S-STANDARD+ EXCLUSIVE IN THE LEHNHOFF SQ-V.

Lehnhoff has taken the symmetrical idea of the S-Standard with the symmetrical shafts and thought it further with an innovative feature.

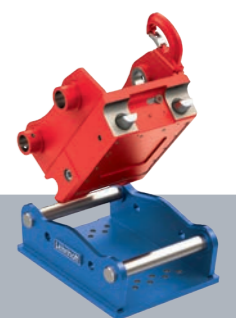
In the fully hydraulic Lehnhoff SQ-V quick couplers, the valve blocks are designed with symmetrically arranged valves. This enables the excavator operator to hydraulically operate attachments such as a tilting bucket or a crusher bucket even in front shovel mode.

HYDRAULIC OPERATION EVEN WHEN ROTATED.*

Only Lehnhoff offers this: the fully symmetrical valve block arrangement enables the use of all hydraulic functions even after 180° rotation of hydraulic attachments, e.g. tilt buckets, screen buckets, crusher buckets.

A built-in protection prevents misdirected engagement of attachments that are not suitable for rotated use.

*Only valid for sizes SQ60V/SQ70V/SQ80V



LEHNHOFF SQ-H: THE HYDRAULIC QUICK COUPLER FOR THE ENTRY INTO THE S-STANDARD.

The Lehnhoff SQ-H quick coupler is the version of the fully hydraulic coupler SQ-V reduced by the valve technology. SQ-H offers easy entry into the S-Standard for excavators from 8 to 70 t – of course, with all the advantages of the S-Standard as well as locking and unlocking, comfortably and safely from the driver's cab, the reverse mode option (180° rotation) for buckets of all types, the compact, robust housing or the LSC safety assistance system.

SQ – THE SYMMETRICAL QUICK COUPLER SYSTEM FROM LEHNHOFF.



Up to
90%

HIGHER EFFICIENCY

With the fully hydraulic Lehnhoff SQ-V system, you change all hydraulic attachments without leaving the cab. This brings you excavator, personnel and time savings that will more than pay for your investment.

Up to
40%

BETTER MACHINE EFFICIENCY AND PRODUCTIVITY

... due to faster tool changes and more versatile applications. Tool changes are therefore useful even with short work cycles, increase efficiency and speed up the completion of construction projects. This creates capacities for further jobs.

100%

INVESTMENT SECURITY

With the Lehnhoff system, Lehnhoff has created a universal interface that allows the use of all attachments on different excavator brands and which has now been installed in over 200,000 excavators. The combination of symmetrical quick coupler and integrated patented Lehnhoff valve technology provides them with investment security. For example, all existing rigid attachments that comply with the S-Standard can still be used.



HIGHER CHANCE OF WINNING THE BID

Versatile excavators are increasingly included in the evaluation for public tenders as a criterion because they promise a more economical project execution due to the more efficient use of the excavator and the personnel. In addition, the range of services offered by your company can be expanded. Work cycles increase efficiency.



INCREASED SERVICE LIFE

... thanks to better protection of the machine and attachments by always using the tools as intended. In addition, low maintenance requirements and low level of contamination of the hydraulic system due to sealed locking components.



MAXIMUM COMFORT AND SAFETY FOR THE DRIVER

... by comfortably changing hydraulic attachments from the cab, which protects the driver both physically and in terms of time. In addition, the many possible applications and the reduced workload increase the driver's motivation and satisfaction.

**HOWEVER YOU SPIN
AND TURN IT:
WITH LEHNHOFF SQ
YOU ARE ALWAYS AT
AN ADVANTAGE.**



UP TO 4 % MORE HYDRAULIC POWER

The Lehnhoff short-stroke valves offer maximum oil flow and thus, depending on the attachment, 4 % more power with less oil heating compared to competitors.

UP TO 2,450 EURO FUEL SAVINGS PER YEAR

Depending on the ton class and fuel price, the higher output enables fuel savings of up to 5 %, or the equivalent of 1,440 litres, compared to the competitors, based on a consumption of 20 l/h (assumption: €1.70/litre diesel, as of March 2023).

MINIMAL INSTALLATION EFFORT

As easy to install as a conventional hydraulic quick coupler thanks to integrated depressurization as standard, which also saves time and money here.

EASIEST MAINTENANCE AND CARE

The replacement of sealing rings or valve cartridges can easily be carried out even on the construction site. Thanks to the flat surfaces, cleaning is very uncomplicated.

MAXIMUM SAFETY AT WORK

The standard LSC safety assist system provides full control from the cab at all times over all operating states of the quick coupler. Faulty locking of the quick coupler is immediately detected and displayed.

The driver can react immediately.





SWITCH TO THE S-STANDARD OF THE QUICK COUPLER MARKET LEADER LEHNHOFF.

With our fully hydraulic quick coupler, you rely on the latest generation and the unique advantages of the Lehnhoff system.



SUPERIOR

Exclusive and only from Lehnhoff: the fully symmetrical valve block arrangement allows the use of all hydraulic functions even after 180° rotation of hydraulic attachments.



ECONOMICAL

Continued use of existing Lehnhoff buckets and adapters with the S-Standard and thus no extra investment required for changeover.



RELIABLE

100 % proven system from the quick coupler market leader Lehnhoff.



SO QUICK: IN JUST 20 SECONDS.

Changing a hydraulic attachment has never been quicker and more comfortable.

Disengaging, engaging, locking and connecting the hydraulic circuits is now carried out at the push of a button within 20 seconds.

You neither need a construction site helper nor do you have to or even leave the cab to do it yourself.

Even with very short working cycles, a tool change not only makes economic sense, but is also fun.

In addition, attachments are no longer used for other purposes, which increases their service life and productivity.



**CREATES EVEN MORE
OPTIONS ON THE
CONSTRUCTION SITE:
THE LEHNHOFF SQ
WITH SYMMETRICALLY
ARRANGED VALVES.**



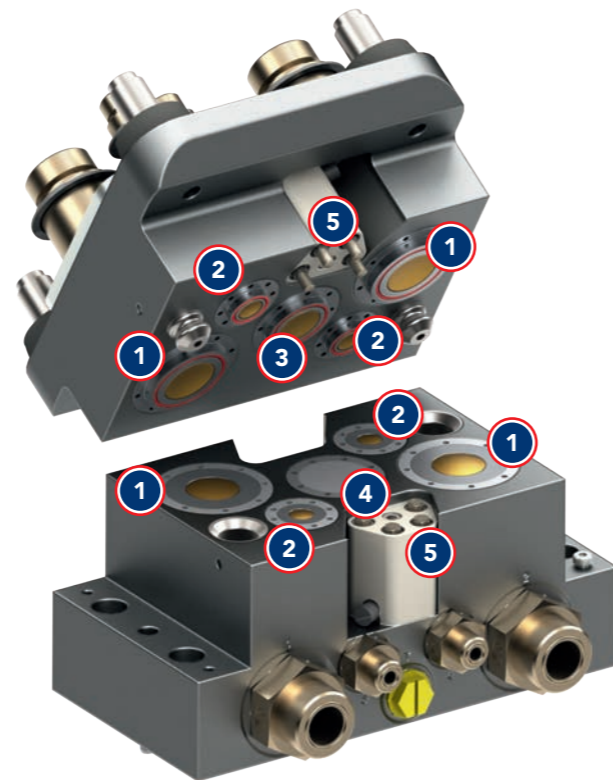
SQ-V – VALVE BLOCKS

S-BLOCK: VALVE BLOCK IN QUICK COUPLER

- With 5 symmetrically arranged short-stroke valves
- Including leakage oil line
- Integrated hydraulic tensioning device for tight hydraulic connections
- Optionally with power feed-through

A-BLOCK: VALVE BLOCK IN THE ATTACHMENT

- Number of valves matched to the respective attachment
- Unoccupied valve positions get a so-called dummy insert
- Short-stroke valves close flush with the block surface ▶ very easy to maintain



VALVE CONFIGURATIONS A-BLOCK

1 Valves working circuit

2 Valves grab rotation circuit

3 Valve drain line

4 Valve dummy

5 Optional current feed-through

Hydraulic
hammer



2 valves

Drum cutter/
compressor



3 valves

Sorting grab/
shear



4 valves

Rotating
compactor



5 valves

PROVIDES MAXIMUM FLOW: THE PATENTED SHORT-STROKE VALVES.

The patented short-stroke valves connect all attachments to the working hydraulics safely and leak-free, and provide maximum oil flow after coupling.

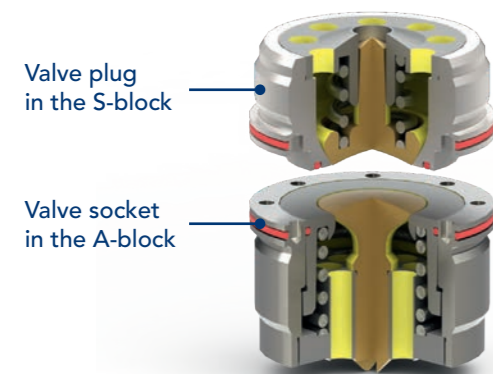
Compared to competitors, fully hydraulic quick couplers from Lehnhoff offer up to 4 % more power with less oil heating.

In addition, fuel consumption is reduced at the same time, which additionally increases the economic efficiency.

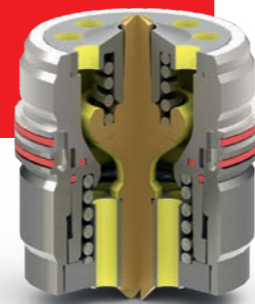
Thanks to fuel consumption reduced by up to 5% compared with the competition, a lot of money can be saved depending on the ton class.

Fuel savings per day:
11 Euro × 220 WD

Savings per year:
2,450 Euro



Valves closed



Valves open – maximum flow



TRIPLE ECONOMIC.

Invested capital should not only be amortised but should at best pay off several times over. This is rarely achieved as well as with the Lehnhoff SQ quick couplers.

EXCAVATOR SAVINGS

SQ-equipped excavators transform mono excavators, which can only perform a single or a few tasks, into genuine multi-functional excavators. This reduces the number of excavators needed on the construction site.

MANPOWER SAVINGS

An excavator equipped with SQ can be used for considerably more tasks. The personnel that you save is available for other tasks. The excavator operator can even change hydraulic attachments with the SQ quick coupler without site assistance from the cab.

TIME SAVINGS

Experience shows: if you can change a tool in around 20 seconds, you will also use different attachments more often, which makes work on the site easier and makes the excavator even more productive. An increase in productivity of up to 40% is not uncommon.



With every tool change, the amortisation period shortens, as our example calculations prove.

CHANGES QUICKLY – PAYS OFF QUICKLY.

This is how quickly the purchase investment of an SQ quick coupler can be amortised (example calculations).

CALCULATION BASIS

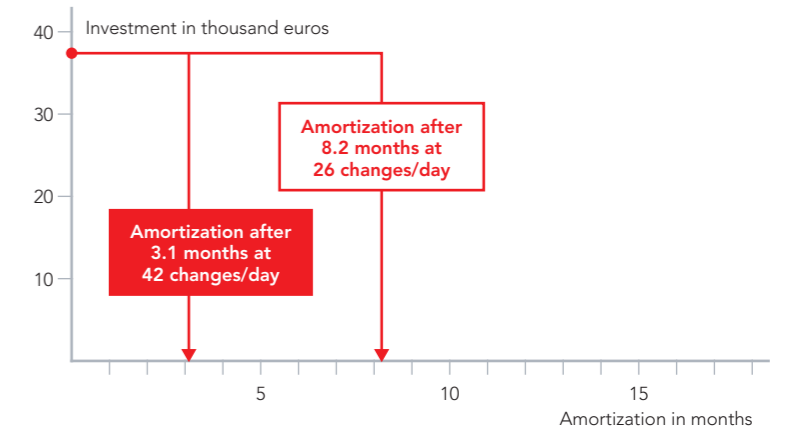
Operating days per year	180
Machine hourly rate	100 Euro
Machine class	20 t excavator (SQ70V, without tilt)

CHANGEVER TIMES WITH HYDRAULIC ATTACHMENTS

2 lines (e.g. tilting bucket/hammer)	4 min
3 lines (e.g. compactor/cutter)	6 min
4 lines (e.g. rotating grab)	8 min
5 lines (e.g. rotating compactor)	10 min

CANAL CONSTRUCTION

Used hydr. attachments	Change/day	
Tilt bucket	8	12
Hammer	2	4
Hanging grapple	8	12
Rotating compactor	6	10
Drum cutter	2	4
Total changes	26	42
Investment	37,400 euros	



CALCULATION BASIS

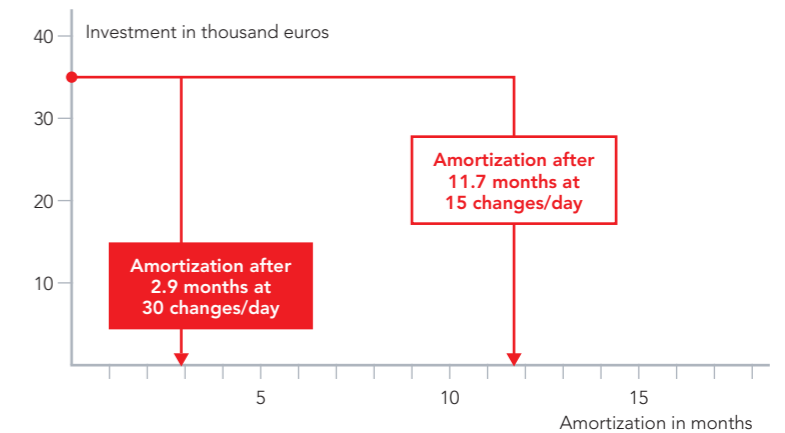
Operating days per year	180
Machine hourly rate	120 Euro
Machine class	35 t excavator (SQ80V, without tilt)

CHANGEVER TIMES WITH HYDRAULIC ATTACHMENTS

2 lines (e.g. tilting bucket/hammer)	4 min
3 lines (e.g. compactor/cutter)	6 min
4 lines (demolition grab/shear)	8 min

DEMOLITION

Used hydr. attachments	Change/day	
Hammer	5	10
Demolition/Sorting grab	5	10
Demolition shear/pulverizer	5	10
Total changes	15	30
Investment	35,000 euros	

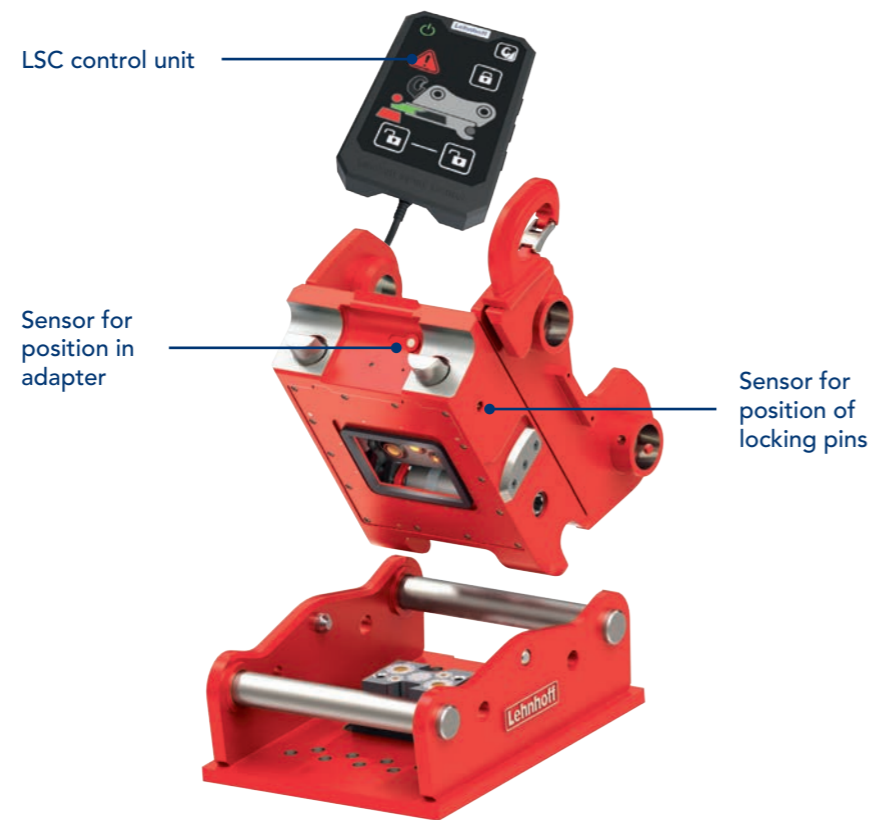




THE LSC SAFETY ASSISTANCE SYSTEM.

Full control of all quick coupler operating states from the cab at all times. Faulty locking of the quick coupler is immediately detected and displayed. The driver can react immediately.

- Permanent monitoring of the operating status by means of integrated illuminated optical display and acoustic signals
- Control of the operating status via operating and display unit in the driver's cab
- Safe 2-finger operation of the unlocking function
- Standard on all new SQ-V and SQ-H quick coupler systems

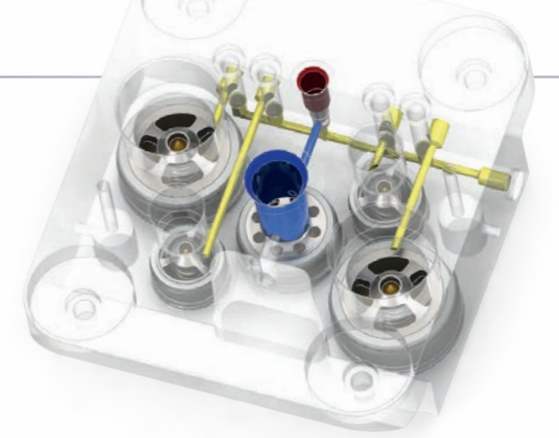


Quick coupler correctly locked



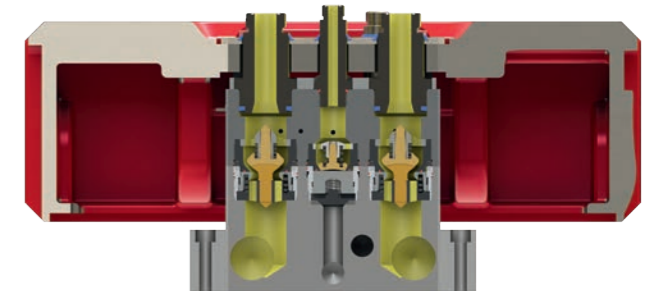
Quick coupler not correctly locked

FULLY INTEGRATED. THE DEPRESSURIZATION UNIT SAVES COST- AND TIME-INTENSIVE INSTALLATION.



To ensure permanent functional reliability, the intra-block depressurization system automatically depressurizes the working and rotating lines when they are unlocked, which also increases the service life of the valves.

The integration into the valve block saves the cost- and time-consuming installation on the excavator. The installation effort corresponds to that of a conventional hydraulic quick coupler.



MAINTENANCE & CLEANING. VERY EASY ON THE CONSTRUCTION SITE.

When designing the fully hydraulic quick coupler, Lehnhoff attached great importance to the fact that maintenance and servicing can be carried out by the excavator operator himself on the construction site. Only the optionally available tool and replacement components are required for this.

EASIEST CLEANING

The flat surface of the valve block makes cleaning quick and easy.

REPLACE WEAR PARTS YOURSELF

Sealing rings are subject to wear and can become brittle over time. If necessary, the sealing rings can be quickly replaced directly on the construction site.

VALVE REPLACEMENT IN NO TIME AT ALL

The same applies to the valves which can be easily replaced on site with the tool, while the block-internal depressurization block prevents excessive oil leakage.



THE LEHNHOFF SYSTEM – S-SERIES



QUICK COUPLERS S-SERIES

HYDRAULIC

FULLY HYDRAULIC

ADAPTERS S-SERIES

10-16 T



SQ60H with Tilt



SQ60H



SQ60V with Tilt



SQ60V



Adapter frame



Weld-on adapter



Universal adapter



Screw-on adapter for drum cutter/compactor



Screw-on adapter for rotatable compactor



Adapter frame with valve protection



Screw-on adapter



Screw-on adapter for hydraulic hammer



Screw-on adapter for demolition grab/shear



Grab adapter for suspended grab

15-32 T



SQ70H with Tilt



SQ70H



SQ70V with Tilt



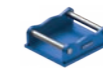
SQ70V



Adapter frame



Weld-on adapter



Universal adapter



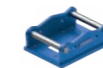
Screw-on adapter for drum cutter/compactor



Screw-on adapter for rotatable compactor



Adapter frame with valve protection



Screw-on adapter



Screw-on adapter for hydraulic hammer



Screw-on adapter for demolition grab/shear



Grab adapter for suspended grab

25-43 T



SQ80H



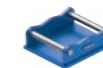
SQ80V



Adapter frame



Weld-on adapter



Universal adapter



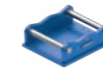
Screw-on adapter for drum cutter/compactor



Screw-on adapter for rotatable compactor



Adapter frame with valve protection



Screw-on adapter



Screw-on adapter for hydraulic hammer



Screw-on adapter for demolition grab/shear

40-70 T



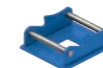
SQ90H



SQ90V



Adapter frame



Weld-on adapter



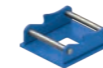
Screw-on adapter for hydraulic hammer



Screw-on adapter for demolition grab/shear



Adapter frame with valve protection



Screw-on adapter



Screw-on adapter for Drum cutter/compactor



Screw-on adapter for rotatable compactor

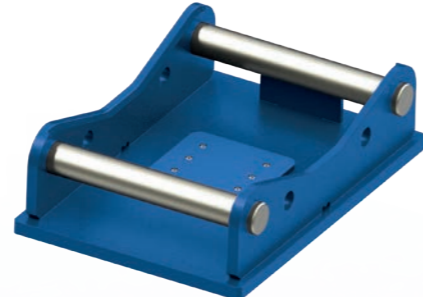
- Market leading system
- Universal standard

SQ ADAPTER – SUITABLE FOR ATTACHMENTS OF ALL TYPES AND BRANDS.

No matter which brand of ATTACHMENT you want to connect to your excavator: Lehnhoff offers customized SQ adapters for all ATTACHMENTS. Due to the defined S-Standard, all SQ adaptations of one class fit all quick couplers that operate the S-Standard, except hydraulic adaptations with different valve systems.



Adapter frame
for rigid attachments, e.g. bucket conversion.



Adapter with base plate
for rigid attachments, e.g. bucket conversion.
Picture shows SQ-V version with valve protection.



Universal adapter SQ-V
with valve block. Adapter can be welded on or can be adapted to any attachment using drill holes.



Screwed adapter SQ-V
with valve block and attachment-specific hole pattern.

ROBUST AND POWERFUL.
THE ATTACHMENTS FOR
SQ QUICK COUPLER.



CREATED FOR ALL-PURPOSE USE: THE DURABLE UNIVERSAL BACKHOE BUCKETS.



GENERAL PURPOSE HIGH PERFORMANCE BACKHOE BUCKETS HTL GP

The HTL GP (General Purpose) universal backhoe buckets are light, economical and durable, and have been created for general purpose use with all hydraulic excavators from 10 to 50 t. They are suitable for grading work in earth moving and a wide range of excavation work.

- Good filling qualities and easy emptying due to double-conical design
- Sandwich bottom made of 400 HB steel, extending with protected weld seam
- Cutting edge made of Leborit 5000 (500 HB)
- Standard: ESCO tooth system Ultralok, other tooth systems on request
- SQ suspension as standard (S-Standard), optional excavator-specific direct suspension or other QC manufacturers

GENERAL PURPOSE BACKHOE BUCKET FOR HYDRAULIC EXCAVATORS 10 TO 50 T

	HTL15 GP		HTL20 GP		HTL25 GP		HTL30 GP		HTL35 GP		HTL40 GP	
Excavator class	10–15 t		15–19 t		19–23 t		23–28 t		28–40 t		40–50 t	
Suspension	SQ60		SQ60/70		SQ70		SQ70/80		SQ80		SQ80/90	
Cutting width	SAE	KG	SAE	KG	SAE	KG	SAE	KG	SAE	KG	SAE	KG
400 / 2 T	180	315	220	340								
500 / 3 T	250	325	300	365								
600 / 3 T	330	387	380	380	430	558						
800 / 4 T*	480	472	560	520	630	669	700	700	850	790		
900 / 4 T					730	690						
1000 / 4 T	640	550	750	600	840	750	930	730	1130	900		
1200 / 5 T	800	640	940	680	1050	865	1170	830	1420	1235		
1400 / 5 T			1130	770	1260	940	1410	1075	1750	1290		
1500 / 5 T*					1370	990	1530	1150	1870	1480	2220	1620
1600 / 5 T*							1650	1206	2020	1550	2400	2210
1800 / 5 T*									2320	1625	2760	2335
2000 / 6 T*									2540	1780		

Cutting width (mm), t = teeth, SAE = capacity (l), KG = weight (kg)
*Depending on the type, the number of teeth varies.

Durable:
universal bucket shape with top wear protection for all-purpose use.



GENERAL PURPOSE BACKHOE BUCKET WITH EXTENDED CUTTING EDGE FOR HYDRAULIC EXCAVATORS 10 TO 28 T

	HTL15 S GP		HTL20 S GP		HTL25 S GP		HTL30 S GP	
Excavator class	10–15 t		15–19 t		19–23 t		23–28 t	
Suspension	SQ60		SQ60/70		SQ70		SQ70/80	
Cutting width	SAE	KG	SAE	KG	SAE	KG	SAE	KG
400	200	315	250	340				
500	280	325						
600	360	387	430	380	480	558		
800	510	472	620	520	700	669	750	700
900					815	690		
1000	690	550	820	600	933	750	990	730
1200	860	640	1020	680	1130	865	1300	830
1400			1220	770	1410	940	1560	1075
1500					1530	990	1690	1150
1600							1730	1206
1800								
2000								

Cutting width (mm), SAE = capacity (l), KG = weight (kg)

Highlight:
the generalist without teeth – with cutting edge for best filling and emptying performance.



COMPACT BACKHOE BUCKET CTL

The CTL compact backhoe buckets are light, economical and durable, and have been created for use with all compact excavators from 8 to 12 t.

- Base made of 400 HB steel
- Blade 200 × 25 mm made of 500 HB steel
- ESCO Ultralok flush holders

UNIVERSAL BACKHOE BUCKET FOR COMPACT EXCAVATORS 8 TO 12 T

	CTL10		CTL12	
Excavator class	8,1–10 t		10,1–12 t	
Suspension	SQ60		SQ60	
Cutting width	SAE	KG	SAE	KG
400 / 3 T	155	163	170	170
500 / 3 T	200	178	225	184
600 / 4 T	255	200	280	220
800 / 5 T	360	236	395	245
900 / 5 T	410	255		
1000 / 5 T	460	285	510	310
1200 / 5 T			620	370

Cutting width (mm), T = teeth, SAE = capacity (l), KG = weight (kg)



Straight:
for perfect levelling with flush teeth adapter.

CTL S EXTENDED CUTTING EDGE WITHOUT TEETH FOR COMPACT EXCAVATORS 8 TO 12 T

	CTL10 S		CTL12 S	
Excavator class	8,1–10 t		10,1–12 t	
Suspension	SQ60		SQ60	
Cutting width	SAE	KG	SAE	KG
400	175	150	190	170
500	220	165	225	184
600	280	185	315	220
800	400	220	445	245
900	450	235		
1000	510	245	570	310
1200			690	370

Cutting width (mm), SAE = capacity (l), KG = weight (kg)



Straight:
for perfect levelling.

FOR HEAVY DUTY IN DEMOLITION AND ROCK: THE HEAVY-DUTY HIGH PERFORMANCE BACKHOE BUCKETS.



HEAVY-DUTY BACKHOE BUCKETS HTL HD/SH

The HTL HD (Heavy Duty) backhoe buckets for hydraulic excavators from 19 to 70 t are specially designed for heavy-duty use in demolition and rock. They easily withstand the toughest operations with high breakout forces. The robust welded construction and extra wear protection ensure a long service life.

- Good filling characteristics and easy emptying due to double-conical design
- Bottom made of 400 HB steel, protruding with protected weld seam
- Wear protection made of 400 and 500 HB steel
- Cutting edge made of Lehbort 5000 (500 HB)
- Trapezoidal cutting edge
- Standard: ESCO tooth system Ultralok, other tooth systems on request
- SQ suspension as standard (S-Standard), excavator-specific direct suspension or other QC manufacturers

Additional equipment HTL-SH:

- Wear protection on the cutting edge (Lip Shrouds)
- Corner wear protection on the base and additional wear protection on the side cutting edge

HEAVY-DUTY BACKHOE BUCKET FOR HYDRAULIC EXCAVATORS 19 TO 70 T

	HTL25 HD		HTL30 HD		HTL35 HD		HTL40 HD		HTL50 HD	
Excavator class	19–23 t		23–28 t		28–40 t		40–50 t		50–70 t	
Suspension	SQ70		SQ70/80		SQ80		SQ80/90		SQ90	
Cutting width	SAE	KG	SAE	KG	SAE	KG	SAE	KG	SAE	KG
600 / 3 T*	430	520								
800 / 4 T*	630	750	700	810	850	870				
900 / 4 T*	730	770								
1000 / 4 T*	840	795	930	970	1130	1050				
1200 / 4 T*	1050	900	1070	1054	1420	1280				
1400 / 4 T*	1260	980	1410	1300	1750	1530				
1500 / 5 T*	1370	1300	1530	1400	1870	1610	2220	1850		
1600 / 5 T*			1650	1333	2020	1620	2400	1950	2900	2950
1800 / 5 T*					2320	1920	2760	2732	3300	3200
2000 / 6 T*									3700	3350

Cutting width (mm), T = teeth, SAE = capacity (l), KG = weight (kg)
*Depending on the type, the number of teeth varies.

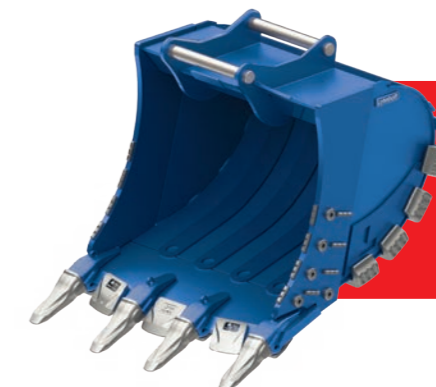


Outstanding:
the breakout forces for work in demolition and rock.

SEVERE HEAVY-DUTY BACKHOE BUCKET FOR HYDRAULIC EXCAVATORS 40 TO 70 T

	HTL40 SH		HTL50 SH	
Excavator class	40–50 t		50–70 t	
Suspension	SQ80/90		SQ90	
Cutting width	SAE	KG	SAE	KG
1400 / 4 T	2040	2230		
1600 / 4 T	2400	2395	2900	3700
1800 / 5 T	2760	2972	3300	3900
2000 / 5 T			3700	4150

Cutting width (mm), T = teeth, SAE = capacity (l), KG = weight (kg)



The 'Severe Heavy-Duty' version defies even the heaviest excavation and rock operations.

FOR SEPARATING AND GRABBING: THE LEHNHOFF SORTING BUCKETS AND SORTING GRABS.



SORTING BUCKET HSL

For separating all types of coarse and fine material. Robust bucket construction in high Lehnhoff quality.

- Base optionally made of rectangular bars (lengthwise) or 400 HB round bars (crosswise)
- Cutting edge made of Lehbort 5000 (500 HB steel), lateral wear sickles (400 HB)
- With 1 and 1/2 leg adapter and ESCO tooth system Ultralok
- SQ suspension as standard (S-Standard), optional direct excavator-specific direct suspension or other QC manufacturers

SORTING BUCKET MADE OF RECTANGULAR BARS OR ROUND BARS
FOR HYDRAULIC EXCAVATORS 10 TO 50 T

	HSL15		HSL20		HSL25		HSL30		HSL35		HSL40	
Excavator class	10–15 t		15–19 t		19–23 t		23–28 t		28–40 t		40–50 t	
Suspension	SQ60		SQ60/70		SQ70		SQ70/80		SQ80		SQ80/90	
Cutting width	SAE	KG	SAE	KG	SAE	KG	SAE	KG	SAE	KG	SAE	KG
1200 / 5 T	800	646	940	710	1160	955						
1400 / 5 T							1410	1280				
1500 / 5 T							1530	1337	1870	1980		
1800 / 5 T											2800	2600

Cutting width (mm), T = teeth, SAE = capacity (l), KG = weight (kg)

Sorting according to choice:
sorting bucket made of rectangular bars or 400 HB round bars.

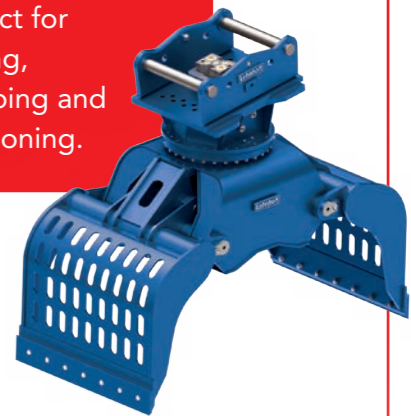


DEMOLITION AND SORTING GRABS HSG

The Lehnhoff demolition and sorting grabs are suitable for sorting, for loading, for setting stones and for grabbing wood. They are characterised by a very robust and at the same time compact construction as well as large opening widths, and convince with high closing, turning and holding forces.

- Rotation angle 360° endless
- Robust construction for long service life
- Replaceable screwed cutting edge
- Maintenance-friendly: all lubrication points accessible in one position
- Gripper plates available closed or with bars on request
- SQ suspension as standard (S-Standard), also available with excavator-specific direct suspension or other QC manufacturers

All-rounder:
perfect for sorting, grabbing and positioning.



SORTING GRABS FOR HYDRAULIC EXCAVATORS 10 TO 50 T

	HSG15	HSG20	HSG25	HSG28	HSG35	HSG50
Excavator class	10–15 t	15–19 t	19–23 t	23–28 t	28–40 t	40–50 t
Suspension	SQ60	SQ60/70	SQ70	SQ70/80	SQ80	SQ90
Opening dimension (mm)	1750	1830	2010	2200	2435	2435
Shell width (mm)	800	900	1000	1100	1200	1400
Closing force (kN)	41	41	53	61	70	80
Weight approx. (kg)	1070	1215	1555	1800	2270	2995
Capacity (l)	325	400	530	640	900	1100

THE HYDRO-UNIVERSAL BUCKETS: ALL-ROUNDERS WITH TWO TYPES OF DRIVE.



HYDRO-UNIVERSAL BUCKET HU RH/HU RM

Stable and robust, for a long service life, even in tough excavation work. The Lehnhoff hydro universal buckets are available in 2 drive versions. As HU RH with tilting drive with hydraulic cylinders and as HU RM with tilting drive with hydraulic rotary motor.

HU RH

- Ideal for medium to heavy excavation and placement of materials
- Backhoe-like shape with round side section
- Hosed to the tilting head
- 2 hydraulic cylinders with piston rod protection, with pressure retaining valve

HU RM

- Ideal for medium to heavy excavation and placement of material
- Sturdy, robust bucket design for long service life even under tough conditions
- Backhoe-like shape
- From size HB 25: standard wear strips (500 HB) across the base



Backhoe bucket with tilting function:
the all-rounder with 2 drive options.

HYDRO-UNIVERSAL BUCKET FOR HYDRAULIC EXCAVATORS 10 TO 40 T

	HU15 RH		HU15 RM		HU20 RH		HU20 RM		HU25 RH		HU25 RM		HU30 RH		HU30 RM		HU35 RH		HU35 RM	
Excavator class	10-15 t		10-15 t		15-19 t		15-19 t		19-23 t		19-23 t		23-28 t		23-28 t		28-40 t		28-40 t	
Suspension	SQ60		SQ60		SQ60/70		SQ60/70		SQ70		SQ70		SQ70/80		SQ70/80		SQ80		SQ80	
Cutting width	SAE	KG	SAE	KG	SAE	KG	SAE	KG	SAE	KG	SAE	KG	SAE	KG	SAE	KG	SAE	KG	SAE	KG
1400	680	680	680	660	800	725	800	858												
1500	730	697	730	720	870	735	870	880			1130	1098			1290	1400				
1600									1200	1250	1200	1205	1370	1349	1370	1500			1650	2150
1800									1370	1317	1370	1336	1550	1431	1550	1600	1850	1882	1850	2240

Cutting width (mm), SAE = capacity (l), KG = weight (kg)

DITCH BUCKET HG.

From levelling work to ditch cleaning and the creation of slopes, Lehnhoff has the right ditch cleaning bucket for every application. Choose from 2 different bucket shapes and 2 tilting drives (hydraulic cylinder or tilting motor) to find the tilting bucket tailored to your needs. Also available in rigid design without tilting drive or hydraulic drive.



From practice for practice:
the embankment pro in 2 bucket shapes and 2 tilting drives.

DITCH BUCKET HG SH WITH HYDRAULIC CYLINDER

- Ideal for excavation, placement of material and ditch cleaning work
- Compact and round shape
- Tilting bucket with 2 × 45° tilting angle
- 2 hydraulic cylinders with piston rod protection and pressure retaining valve
- Hosed to tilting head
- Optional: rear cutting edge RS (150 × 16 mm) for levelling
- From size HG 30: standard wear strips (500 HB) cross the base
- With lateral water drainage holes



TILTING DITCH BUCKET HG SM WITH TILT MOTOR

- Ideal for excavation, placement of material and trench clearing work
- Compact and round shape
- Tilting bucket with 2 × 45° tilt angle
- With hydraulic rotary motor, protected with pressure relief valve to 190 bar
- Hosed to the tilting head
- With rear cutting edge and 2 bracing ridges
- From size HG 30: wear strips as standard (500 HB) across the base



DITCH BUCKET HG LH WITH HYDRAULIC CYLINDER

- Ideal for levelling and embankment work
- Long base with 2 reinforcing ribs
- Tilting bucket with 2 × 45° tilt angle
- With integrated rear cutting edge and 2 sturdy inner bars
- 2 hydraulic cylinders with piston rod protection, with pressure retaining valve
- Hosed to the tilting head
- From size HG 30: wear strips (500 HB) across the base as standard
- With lateral water drainage holes



TILTING DITCH BUCKET HG LM WITH TILT MOTOR

- Ideal for levelling and embankment work
- Long base with 2 reinforcing ribs
- Tilting bucket with 2 × 45° tilting angle and water drainage holes
- With integrated rear cutting edge and 2 sturdy inner bars
- With hydraulic rotary motor, protected with pressure relief valve to 190 bar
- Hosed to the tilting head
- From size HG 30: wear strips (500 HB) across the base as standard
- With lateral water drainage holes



HYDRAULIC DITCH BUCKET FOR HYDRAULIC EXCAVATORS 10 TO 50 T

	HG15 SH		HG15 LH		HG15 SM		HG15 LM		HG20 SH		HG20 LH		HG20 SM		HG20 LM		HG25 SH		HG25 LH		HG25 SM		HG25 LM		HG30 SH		HG30 LH		HG30 SM		HG30 LM		HG35 SH		HG35 LH		HG35 SM		HG35 LM		HG40					
Excavator class	10–15 t		10–15 t		10–15 t		10–15 t		15–19 t		15–19 t		15–19 t		15–19 t		19–23 t		19–23 t		19–23 t		19–23 t		23–28 t		23–28 t		23–28 t		23–28 t		28–40 t		28–40 t		28–40 t		28–40 t		40–50 t					
Suspension	SQ60		SQ60		SQ60		SQ60		SQ60/70		SQ60/70		SQ60/70		SQ60/70		SQ70		SQ70		SQ70		SQ70		SQ70/80		SQ70/80		SQ70/80		SQ70/80		SQ80		SQ80		SQ80		SQ80		SQ90					
Cutting width	SAE	KG	SAE	KG	SAE	KG	SAE	KG	SAE	KG	SAE	KG	SAE	KG	SAE	KG	SAE	KG	SAE	KG	SAE	KG	SAE	KG	SAE	KG	SAE	KG	SAE	KG	SAE	KG	SAE	KG	SAE	KG	SAE	KG	SAE	KG	SAE	KG				
1400	500	655	500	678	500	730	500	705																																						
1500	560	720	550	744	560	740	550	740																																						
1600																																														
1800									600	698	600	735	600	790	600	792																														
2000									660	751	660	784	660	850	660	940	860	954	860	973	860	910	860	950	1250	1337	1130	1310	860	910	860	950	1400	1720	1370	1833	1400	1998	1370	2000						
2200																	950	978	950	1000																							1600	1830		
2400																	1040	1004	1040	1050	1040	970	1040	1042	1500	1511	1040	1050	1040	970	1040	1042	1700	1925	1680	1860	1700	2312	1680	2200	1760	1940				

Cutting width (mm), SAE = capacity (l), KG = weight (kg)

SIMPLY TWICE ON THE GO. THE RIGID ATTACHMENTS FROM LEHNHOFF.

BIONIC RIPPER TOOTH HRZ

The bionically optimized ripper teeth from Lehnhoff stands for efficiency and stability when ripping and loosening rock, stone and soil. With welded-on tooth tip and Lehmatic adapter. Ideal for:

- loosening hard or frozen soils
- demolition work
- loosening rock and stone
- breaking up road surfaces and concrete paving
- clearing work
- SQ adapter included



Learned by nature:
bionically optimized ripper teeth
for maximum stability.

BIONIC RIPPER TEETH
FOR HYDRAULIC EXCAVATORS 10 TO 40 T

	HRZ18	HRZ28	HRZ38
Excavator class	10–19 t	19–28 t	28–40 t
Suspension	SQ60/70	SQ70/80	SQ80
Suspension	SW10	SW21/25	SW21/25
Tooth radius (mm)	950	1150	1250
Weight (kg)	274	420	485

PALLET FORK HPG

Enables loads to be picked up on common pallets using adjustable forks.

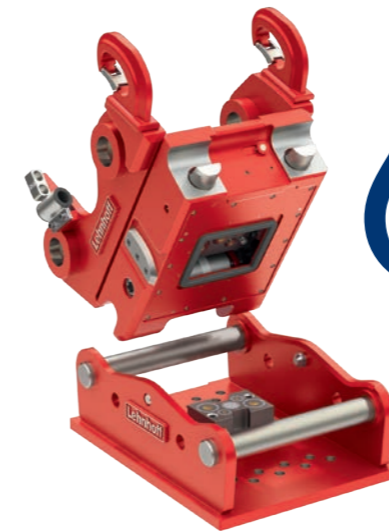
- For loads up to 4 t
- SQ adapter included



Multifunctional device:
for lifting and transporting
of pallets and
goods of all kinds.

PALLET FORK
FOR HYDRAULIC EXCAVATORS 10 TO 19 T

	HPG20
Excavator class	10–19 t
Suspension	SQ60/70
Width (mm)	1380
Forks (mm)	1200 × 140 × 50
Load capacity (t)	4
Weight (kg)	512



Lehnhoff is the market leader in many sectors, including quick couplers, where the company is the only full-liner in the world to offer mechanical, hydraulic and fully hydraulic systems for everything from 1-t mini excavators to 130-t hydraulic excavators.

The unique economic advantage for customers is the compatibility that allows the continued use of existing attachments from the last 30 years. This form of sustainability is part of our customer promise and at the same time the cornerstone of our design philosophy which also includes the robust steel housing typical of Lehnhoff and the unmodified system patented since the 1990s.

Another core competence of Lehnhoff is a meticulously managed database of all excavators on the market, including suspension dimensions. A very fine subdivision of these currently approx. 5,000 excavator types into suspension groups ensures that the excavator retains

almost its original bucket in and out tipping angles even with a quick coupler system.

Furthermore, Lehnhoff's database contains all commercially available attachments with connection dimensions, so that suitable adapters for hammers, grabs and the like can be provided in the shortest possible time.



OUR TRADITION IS INNOVATION. THE HISTORY OF THE LEHNHOFF SYSTEM.

Lehnhoff's over 60-year company history is full of innovations that have revolutionised work on the construction site and which are based on an unchanged construction philosophy. This means that Lehnhoff customers can be confident that the compatibility of already existing Lehnhoff products with new devices is guaranteed. This gives our customers investment security and simplifies the handling as well as longevity.

- 1960** Ernst Günter Lehnhoff founds the company which offers repair services for construction tools.
- 1962** The company founds its own engineering office for innovative hard steel equipment for earth moving equipment.
- 1965** Invention of the Lehnhoff bucket teeth system.
- 1966** Production of the first customised special buckets.
- 1967** Invention of the armoured steel.
- 1969** Invention of the first tilt bucket.
- 1989** Introduction of the Lehmatic quick coupler system for hydraulic excavators under the leadership of the then owner Peter Lehnhoff.

- 1992** The birth of the Lehnhoff system, consisting of mechanical and hydraulic quick couplers for excavators from 1 to 70 t.
- 1997** The Lehnhoff system is extended to the excavator class 130 t.
- 2003** The Symlock® adapter was invented which can also be used to rotate the attachment (bucket) by 180°.
- 2007** Lehnhoff introduced the first fully hydraulic quick couplers onto the market.
- 2008** A new production hall with a robot welding line is opened.
- 2010** Lehnhoff became the only full-liner in the world in the field of quick couplers.
- 2016** SQ (Symmetrical Quick coupler) was added which is based on the international S-Standard.
- 2020** Introduction of the certified Double Lock security mechanism.
- 2021** Around three decades after its introduction, Lehnhoff has now equipped 200,000 excavators with the Lehnhoff system.
- 2023** Introduction of a new generation of more efficient teeth with less wear.

**MADE IN
GERMANY**



- Market leading system
- Universal standard

TECHNICAL DATA

LEHNHOFF SQ QUICK COUPLER



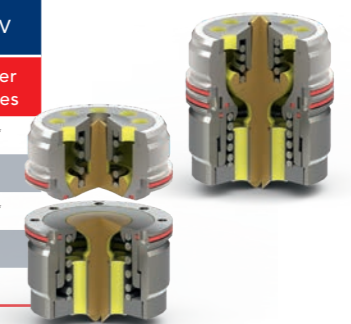
	SQ60H SQ60V	SQ70H SQ70V	SQ70/55H SQ70/55V	SQ80H SQ80V	SQ90H SQ90V
Excavator class*	8–18 t	15–28 t	18–32 t	25–43 t	40–70 t
Pick-up shaft	60	70	70	80	90
Axle spacing (mm)	480	600	600	670	750
Width (mm)	338	448	550	588	748
Weight** approx. (kg)	170	300	340	430	740
Valve configuration (V)	3 × KV1 2 × KV3	2 × KV1 2 × KV4 1 × KV3	2 × KV1 2 × KV4 1 × KV3	2 × KV1 2 × KV4 1 × KV3	2 × KV1 1 × KV3 2 × KV6 + optional: 1 × KV1 (grease) 1 × KV3 (water)

*Approximate classification. Suspension and maximum breakaway force of the excavator must be taken into account.
**Depending on excavator-specific suspension.

LEHNHOFF SHORT STROKE VALVES

Designation	Size	Flow rate (l/min)	SQ60V	SQ70V SQ70/55V	SQ80V	SQ90V
			Number of valves	Number of valves	Number of valves	Number of valves
KV1	> DN 12 1/2"	110	3	2	2	2 / 3*
KV2	> DN 16 5/8"	160				
KV3	> DN 20 3/4"	240	2	1	1	1 / 2*
KV4	> DN 25 1"	550		2	2	
KV6	> DN 51 2"	650				2

*Optional media feed-throughs water/grease.





LEHNHOFF HARTSTAHL GMBH

Rungsstrasse 10–15 | D-76534 Baden-Baden
Post box 11 01 65 | D-76487 Baden-Baden

Tel. +49 7223 966-0
Fax +49 7223 966-149

lehnhoff.de
info@lehnhoff.de

Hotline sales: +49 7223 966-140

YOUR RESPONSIBLE DEALER: